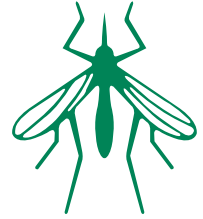


# Altosid<sup>®</sup> XR

## EXTENDED RESIDUAL BRIQUETS



**A SUSTAINED RELEASE PRODUCT TO PREVENT ADULT MOSQUITO EMERGENCE  
(INCLUDING THOSE WHICH MAY TRANSMIT WEST NILE VIRUS)**

### SPECIMEN LABEL

#### ACTIVE INGREDIENTS:

(S)-Methoprene (CAS #65733-16-6)  
(Dry Weight Basis): . . . . . 2.1%  
**OTHER INGREDIENTS:** . . . . . 97.9%  
Total. . . . . 100.0%

EPA Reg No. 2724-421

#### PRECAUTIONARY STATEMENTS HAZARDS TO HUMANS AND DOMESTIC ANIMALS - CAUTION

Causes moderate eye irritation. Harmful if absorbed through skin. Avoid contact with skin, eyes, or clothing. Wash thoroughly with soap and water after handling.

KEEP OUT OF REACH OF CHILDREN  
**CAUTION**  
SEE ADDITIONAL PRECAUTIONARY STATEMENTS

#### INTRODUCTION

**ALTOSID<sup>®</sup> XR BRIQUETS** are designed to release effective levels of (S)-methoprene insect growth regulator over a period up to 150 days in mosquito breeding sites. Release of (S)-methoprene insect growth regulator occurs by dissolution of the briquet. Soft mud and loose sediment can cover the briquets and inhibit normal dispersion of the active ingredient. The product may not be effective in those situations where the briquet can be removed from the site by flushing action.

**ALTOSID XR BRIQUETS** prevent the emergence of adult mosquitoes including: *Anopheles*, *Culex*, *Culiseta*, *Coquillettidia*, and *Mansonia* spp., as well as those of the floodwater mosquito complex (*Aedes*, *Ochlerotatus*, and *Psorophora* spp.) from treated water. Treated larvae continue to develop normally to the pupal stage where they die.

**NOTE:** (S)-methoprene insect growth regulator has no effect on mosquitoes which have reached the pupal or adult stage prior to treatment.

#### FIRST AID

Call a poison control center or doctor for treatment advice.

<b>If in eyes</b>	<ul style="list-style-type: none"><li>• Hold eye open and rinse slowly and gently with water for 15-20 minutes.</li><li>• Remove contact lenses, if present, after the first 5 minutes, then continue rinsing eye.</li></ul>
<b>If on skin or clothing</b>	<ul style="list-style-type: none"><li>• Take off contaminated clothing.</li><li>• Rinse skin immediately with plenty of water for 15-20 minutes.</li></ul>

Have the product container or label with you when calling a poison control center or doctor, or going for treatment. You may also contact 1-800-248-7763 for emergency medical treatment information.

#### ENVIRONMENTAL HAZARDS

Do not contaminate water when disposing of unused product.

#### DIRECTIONS FOR USE

It is a violation of Federal Law to use this product in a manner inconsistent with its labeling.

## APPLICATION TIME

Place **ALTOSID XR BRIQUETS** at or before the beginning of the mosquito season. Apply **ALTOSID XR BRIQUETS** prior to flooding when sites are dry, or on snow and ice in breeding sites prior to spring thaw. Under normal conditions, 1 application will last the entire mosquito season, or up to 150 days, whichever is shorter. Alternate wetting and drying will not reduce their effectiveness.

## APPLICATION RATES

*Aedes*, *Ochlerotatus*, and *Psorophora* spp.: For control in non-(or low-) flow shallow depressions ( $\leq 2$  feet in depth), treat on the basis of surface area, placing 1 **ALTOSID XR BRIQUET** per 200 ft<sup>2</sup>. Place briquets in the lowest areas of mosquito breeding sites to maintain continuous control as the site alternately floods and dries up.

*Culex*, *Culiseta* and *Anopheles* spp.: Place 1 **ALTOSID XR BRIQUET** per 100 ft<sup>2</sup>.

*Coquillettidia* and *Mansonia* spp.: For application to cattail marshes and water hyacinth beds. For control of these mosquitoes, place 1 **ALTOSID XR BRIQUET** per 100 ft<sup>2</sup>.

*Culex* sp. in storm water drainage areas, sewers, and catch basins: For catch basins, place 1 **ALTOSID XR BRIQUET** into each basin. In cases of large catch basins, follow the chart below to determine the number of briquets to use. For storm water drainage areas, place 1 briquet per 100 ft<sup>2</sup> of surface area up to 2 ft deep. In areas that are deeper than 2 feet, use 1 additional briquet per 2 feet of water depth.

Water flow pressure increases the potential dissolution of the briquet. Conduct regular inspections (visual or biological) in areas of water flow to determine if the briquet is still present. Adjust the retreatment interval based on the results of an inspection.

### ALTOSID XR BRIQUETS Application Chart

Number of Briquets	Catch Basin Size (Gallons)	Surface Area/Water Depth (ft)
1	0 – 1500	0 – 2
2	1500 – 3000	2 – 4
3	3000 – 4500	4 – 6
4	4500 – 6000	6 – 8

## APPLICATION SITES

**ALTOSID XR BRIQUETS** are designed to control mosquitoes in treated areas. Examples of application sites are: storm drains, catch basins, roadside ditches, fish ponds, ornamental ponds and fountains, other artificial water-holding containers, animal watering troughs, cesspools and septic tanks, waste treatment and settling ponds, flooded crypts, transformer vaults, abandoned swimming pools, tires, construction and other manmade depressions, cattail marshes, water-hyacinth beds, vegetation-choked phosphate pits, pastures, meadows, rice fields, freshwater swamps and marshes, salt and tidal marshes, treeholes, woodland pools, floodplains, and dredging spoil sites. For application sites connected by a water system, i.e., storm drains or catch basins, treat all of the water-holding sites in the system to maximize the efficiency of the treatment program.

## STORAGE AND DISPOSAL

Do not contaminate water, food, or feed by storage or disposal.

**STORAGE:** Store in a cool place. Do not reuse empty container.

**PESTICIDE DISPOSAL:** Wastes resulting from the use of this product may be disposed of on site or at an approved waste disposal facility.

**CONTAINER DISPOSAL:** Dispose of empty bag in a sanitary landfill or by incineration, or if allowed by state and local authorities, by burning. If burned, stay out of smoke.

## WARRANTY AND CONDITIONS OF SALE

Seller makes no warranty, expressed or implied, concerning the use and handling of this product other than indicated on the label. To the extent permitted by law, Buyer assumes all risks of use and handling of this material when such use and handling are contrary to label instructions.

For information, or in an emergency, call 1-800-248-7763 or visit our Web site: [www.altosid.com](http://www.altosid.com)

**Wellmark**

Wellmark International  
Schaumburg, Illinois U.S.A.

**ZOECON**  
Professional  
Products

ALTOSID®, ZOECON® and WELLMARK® are registered trademarks of Wellmark International.  
U.S. Patent No. 7,196,116 B1  
©2005 WELLMARK INTERNATIONAL  
Made in USA

October 2005  
Schaumburg, IL